

RSM系列螺旋式混料机适用于各种颗粒状固态塑料原料及色母之搅拌及混色，不能用于粉末易爆易燃及其挥发性物品的物料混合，本机是塑料混合大型设备，它具有容量大，能耗低，加工效率高等优点，是塑料挤出注射加工生产中理想的辅助设备。

RSM series Rotation Mixer suitable for granule solid plastic material and color masterbatch mixing, but cannot mix the following material: 50-100% powder, Flammable and explosive material, Volatile material. This series is a kind of large plastic color mixer. And also, it is characterized of large mixing capacity, low energy consumption and high efficiency. It is widely used for plastic extrusion, injection processing.

配备24小时定时器，到达设定的混料时长后自动停止。
24hr timer setting, stop automatically after reaching to set mixing time.

皮带轮传动，传动平稳，噪声低。
Pulley belt driven, driven stably, lower noise.

安全开关，桶盖打开后，机器自动停止。
Safety switch to stop machine automatically after opening the cover.

气弹簧支撑杆，进料斗打开不回弹，方便进料。
Air spring to open cover easily, do not rebound, easy to feed.

不锈钢吸料管，与吸料机连接输送到注塑机料斗。
Suction pipe, can conveying material to injection molding machine hopper by auto loader.

内部全不锈钢制造，带螺旋混料器，混料快速均匀。
Made of stainless steel body inside, spiral mixing blades, mixing evenly and quickly.

吸料管，可连接注塑机料斗。
Suction pipe, can conveying material to injection molding machine hopper by auto loader.

方向脚轮，移动方便。
Universal casters, easy to move.

两方向放料口，放料快速方便。
Two discharge port placed on two side.

接近开关保护，放料板打开，机器自动停止运行。
Proximity switch protection, discharge plate opened, machine stop automatically.

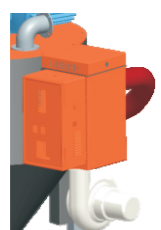
配备24小时定时器，到达设定的混料时长后自动停止。
24hr timer setting, stop automatically after reaching to set mixing time.

敞开式加料斗，进料方便。
Open-style feeding hopper mouth, easy to feed material.

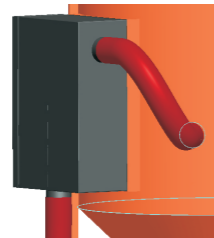
RSM80~RSM260 小型混色机
RSM80~RSM260 smaller spiral mixers

RS1500~RSM3000 大型混色机
RSM1500~RSM3000 big spiral mixers

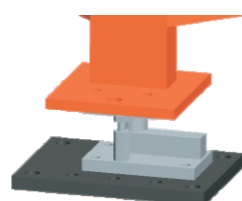
可选配件 Optional spare parts



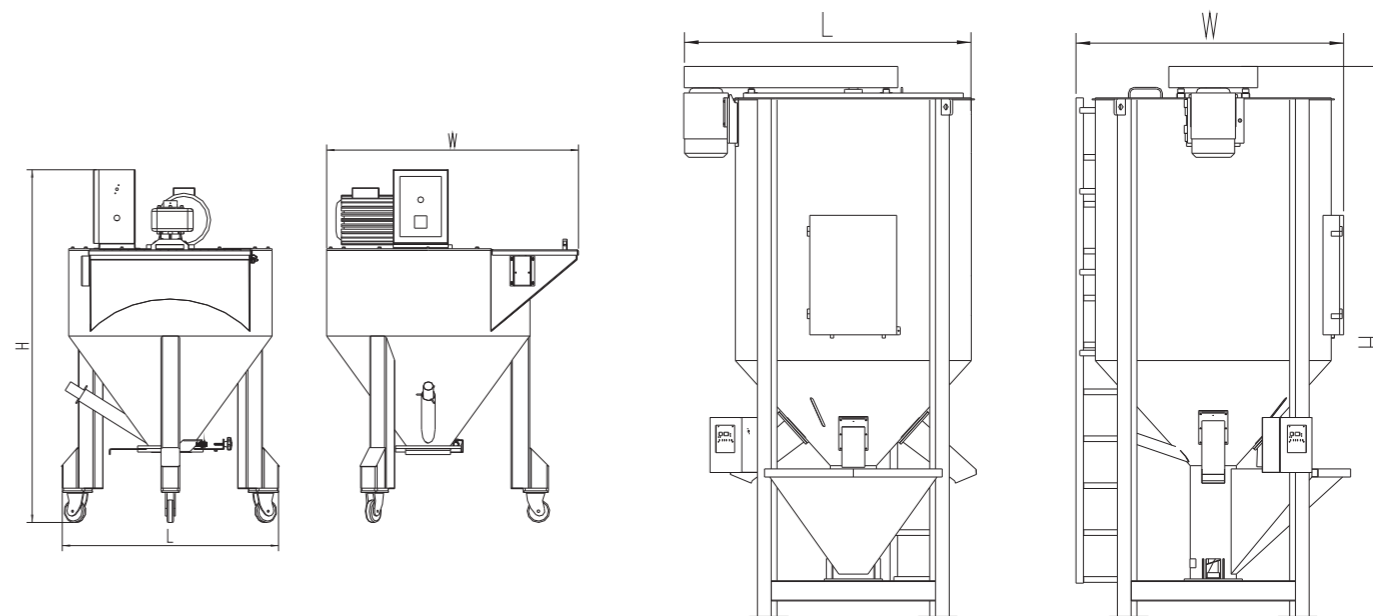
RSM80~RSM260
加热系统
heating function



RSM1500~RSM3000
加热系统
heating function



RSM1500~RSM3000
可选配称重仪
weighing gauge



规格表 Specifications

| 机型 Model | 小型混色机 | | | | | 大型混色机 | | | | |
|------------------------------|-----------|---------|---------|---------|---------|----------|----------|----------|----------|---------|
| | RSM-80 | RSM-160 | RSM-260 | RSM-500 | RSM-600 | RSM-1000 | RSM-1500 | RSM-2000 | RSM-3000 | |
| 电机功率 Motor power | kw | 0.37 | 0.55 | 1.1 | 2.2 | 2.2 | 4 | 5.5 | 5.5 | 7.5 |
| 最大混料量 Max-mixing capacity | kg/min | 50/10 | 100/10 | 150/10 | 500/15 | 600/15 | 1000/15 | 1500/20 | 2000/20 | 3000/30 |
| 主轴转速 Rotor speed | rpm | 210 | 210 | 210 | 420 | 420 | 420 | 390 | 390 | 390 |
| 加热系统 With heating system | 风机功率 (kw) | 0.155 | 0.21 | 0.215 | 0.34 | 0.34 | 1.03 | 1.03 | 1.03 | 3 |
| | 加热功率 heat | 4 | 5.5 | 6 | 28 | 28 | 32 | 32 | 58 | 58 |
| 重量 weight | kg | 55 | 100 | 150 | 360 | 400 | 550 | 630 | 750 | 900 |
| 外形尺寸 External size | | | | | | | | | | |
| 宽 W | mm | 770 | 940 | 1000 | 1430 | 1430 | 1500 | 1700 | 1820 | 2000 |
| 长 L | mm | 660 | 810 | 880 | 1240 | 1240 | 1400 | 1800 | 2050 | 2300 |
| 高 H | mm | 1130 | 1320 | 1485 | 2570 | 2670 | 3020 | 3410 | 3520 | 3950 |

产品规格若有变更，恕不另行通知。

Please excuse for not note if some specifications of products are changed.

Note 注:

- 1) 一般混料时间为5-10分钟。
- 2) 机器为3Φ，220/380V·50Hz。

- 1) in general the mixing time is 5-10 minutes.
- 2) The voltage specification of machine is 30, 220/380V, 50Hz. The voltage can be changed as you require.